



CARGO CONTAINER F-35

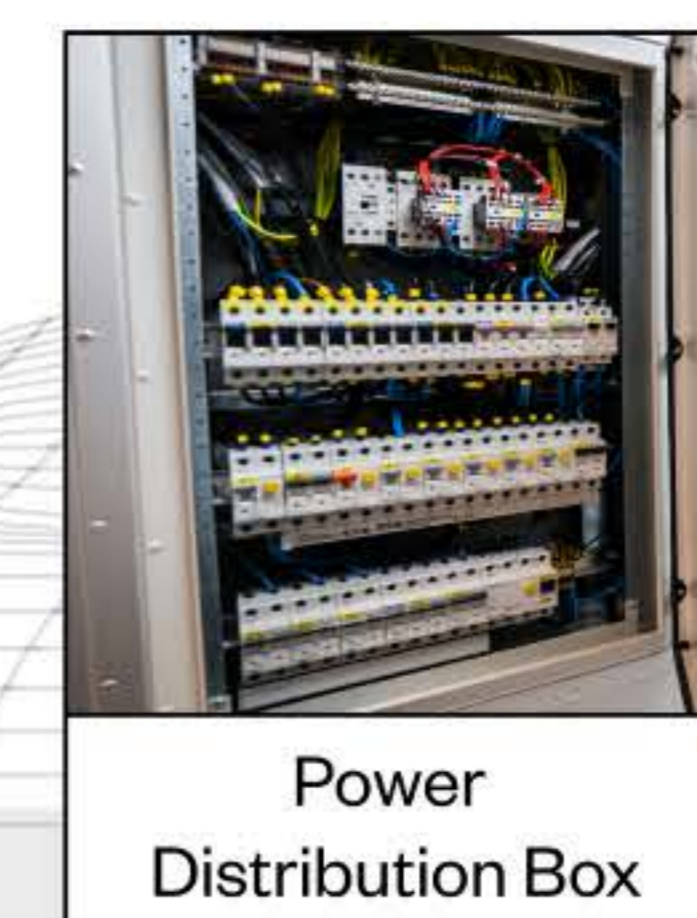
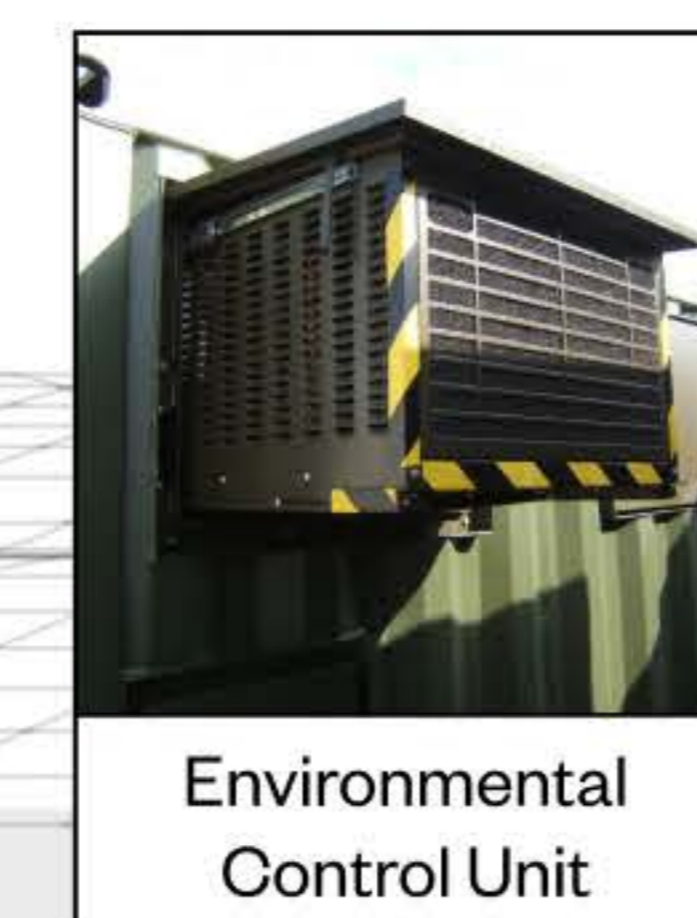
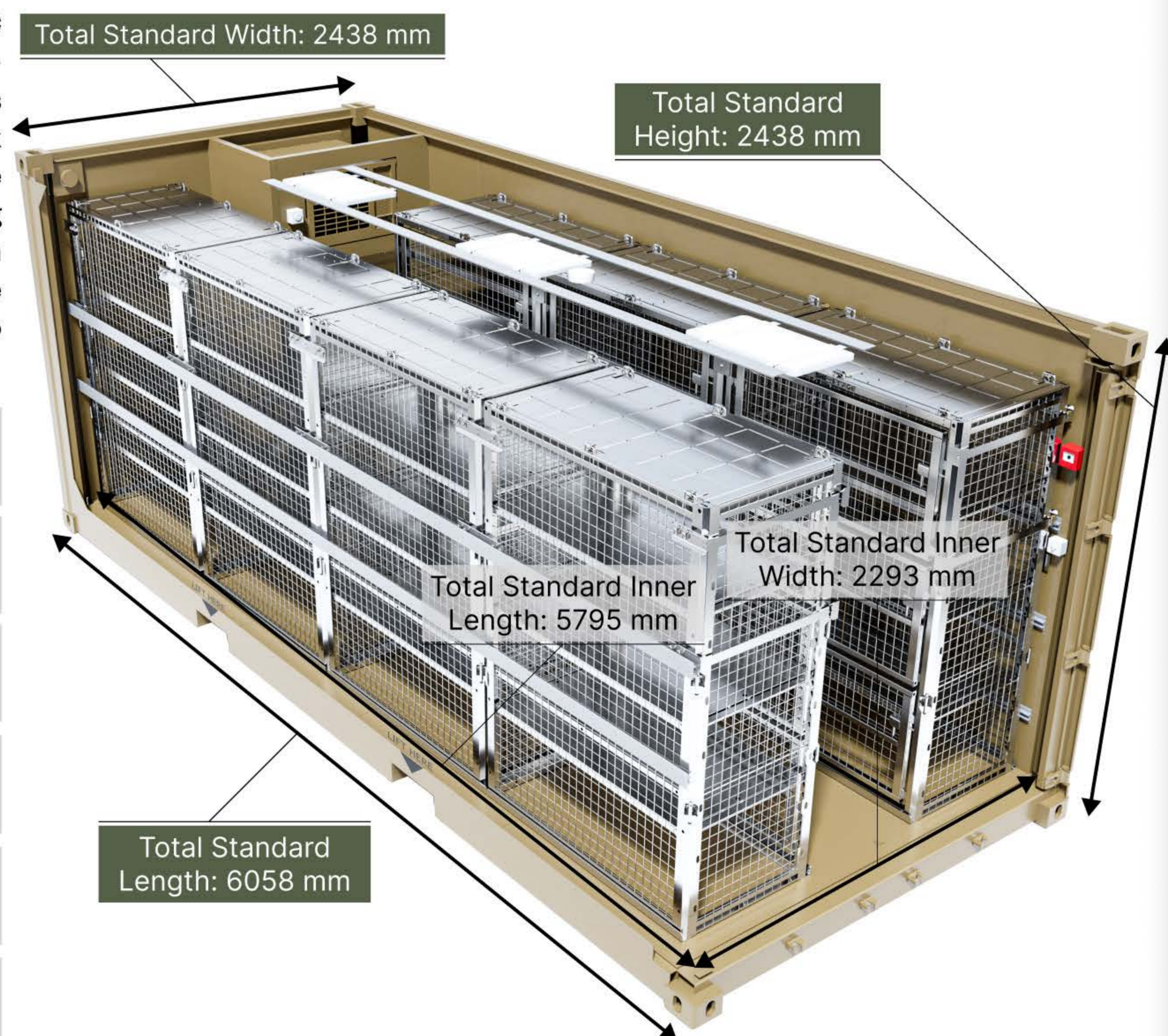
The F-35 cargo container is an insulated, CSC-certified 1C unit in accordance with ISO 668 and ISO 1496-1, designed with an end opening for secure and efficient operations. Inside, a modular system of shelves and cabinets is installed, fully reconfigurable by the user without the need for special tools. The system can be easily removed for maintenance or to repurpose the container for alternative operational needs. At the rear, it features a foldable work desk with a double Schuko 230 V AC outlet, providing convenient access to power. These features make the F-35 cargo container a versatile solution for operational requirements.



SPECIFICATIONS

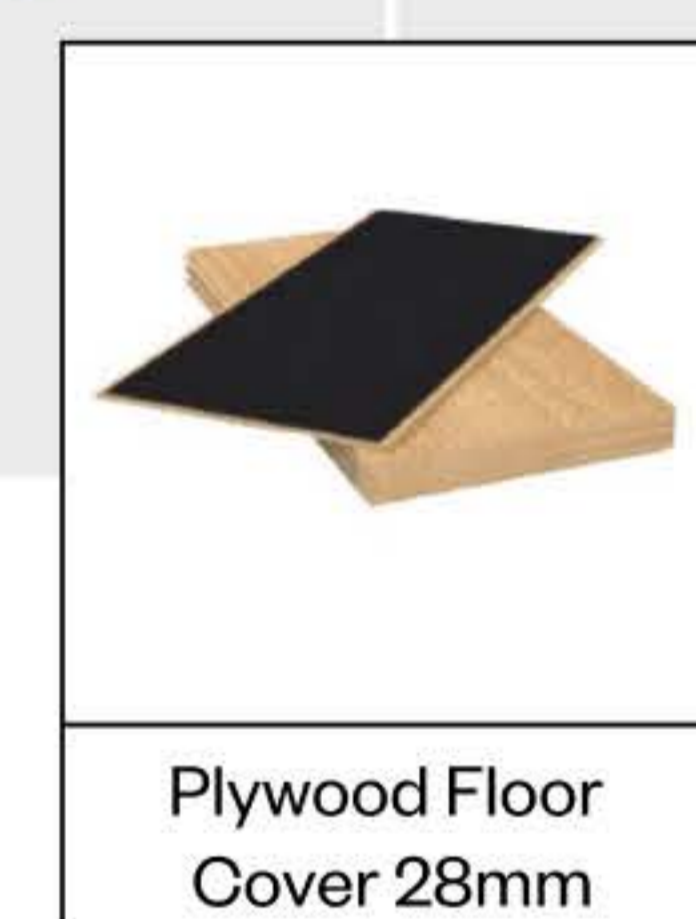
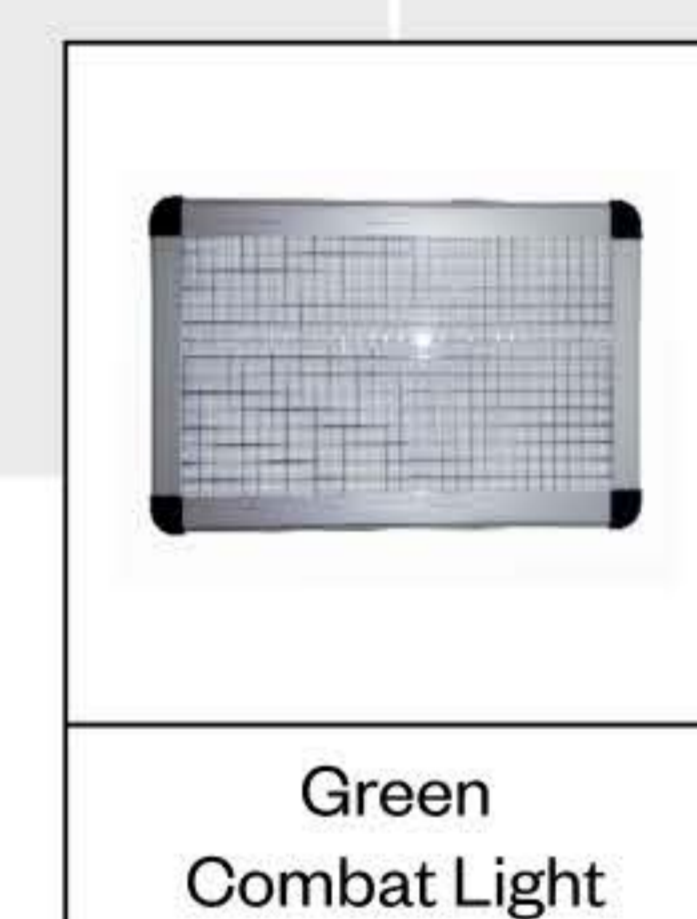
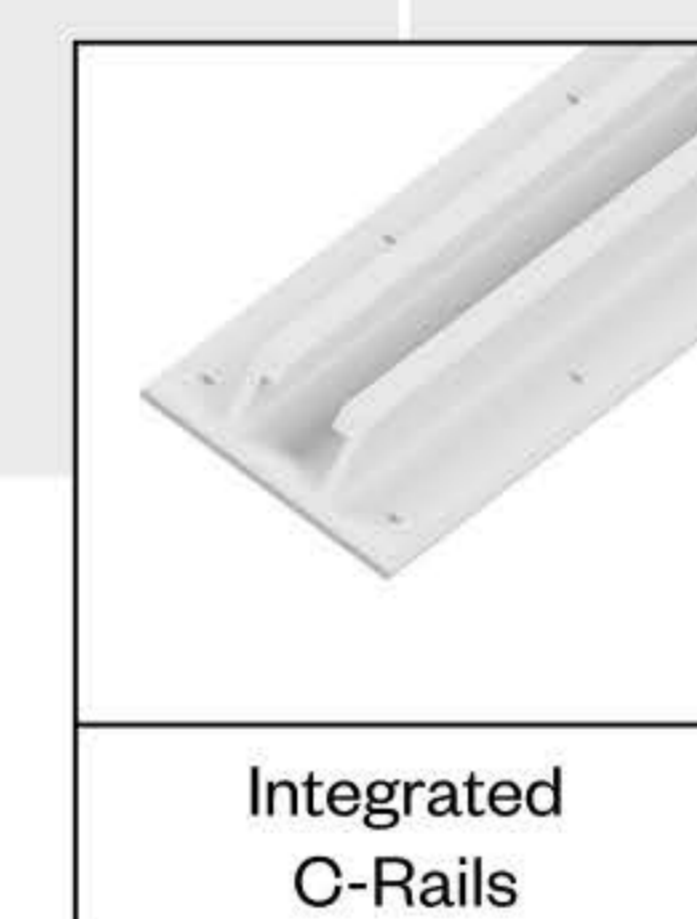
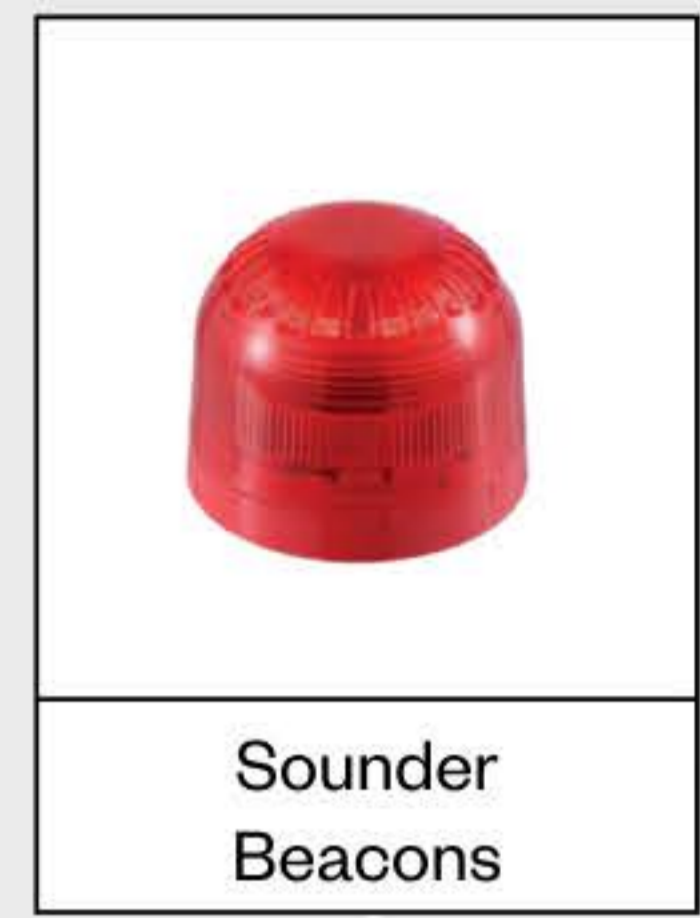
The F-35 cargo container is built to meet ISO and CSC standards, with reinforced steel panels and corrosion-protected finishes ensuring durability. External dimensions of 6058 x 2438 x 2438 mm and internal space of 5795 x 2293 x 2204 mm provide efficient cargo capacity. A tare weight of 5375 kg and maximum gross weight of 24,000 kg guarantee reliable performance. Integrated C-rails with lashing points allow flexible and secure fastening, while the removable cage system supports safe and organized cargo handling for both civilian and military use.

STANDARD DIMENSIONS: 6058 X 2438 X 2438 MM	INNER DIMENSIONS: 5795 X 2293 X 2204 MM
INTEGRATED C-RAILS & LASHING POINTS	EXT. COLOR - RAL1039 INT. COLOR - RAL1013
REMOVEABLE / CAGE STORAGE SYSTEM	GREEN COMBAT LIGHT
NET TARE WEIGHT: 5375 KG	MAX GROSS WEIGHT: 24000 KG
BUILT - IN HVAC UNIT	EXTERNAL & INTERNAL POWER SUPPLY
ISO STANDARDS COMPLIANCE	CSC CERTIFICATION



OPTIONS

The F-35 cargo container can be delivered with tailored options to enhance safety and functionality. Features include integrated C-rails, anchor points rated 3000 & 8000 daN, and reinforced plywood floor cover (28 mm). Additional solutions such as cage storage, HVAC, green combat lighting, and power supply connections provide flexibility for demanding operations.



TOP VIEW OF LASHING POINTS

