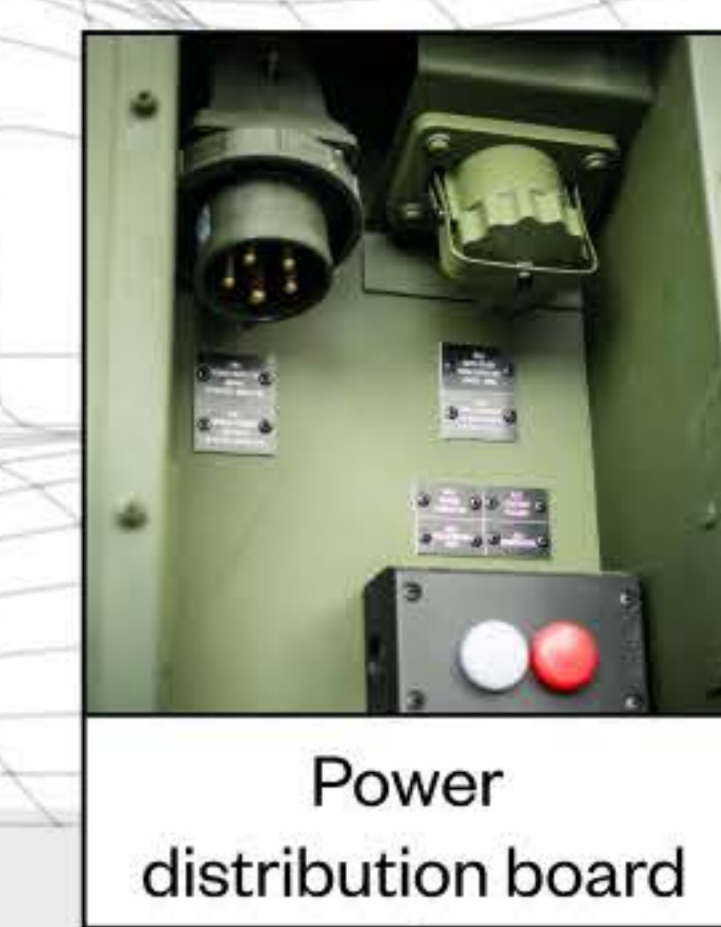
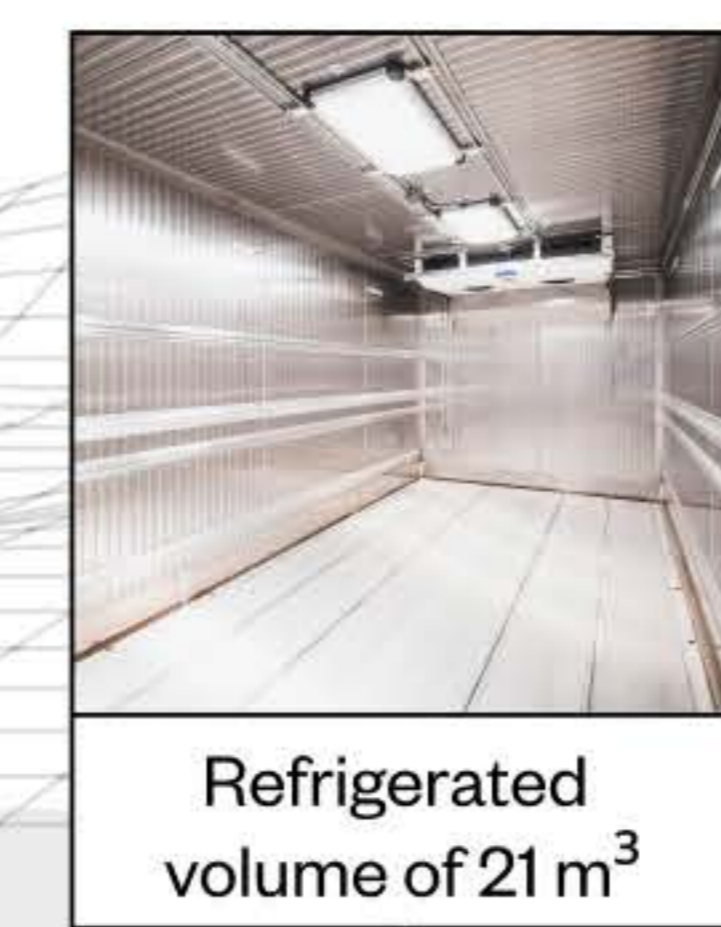




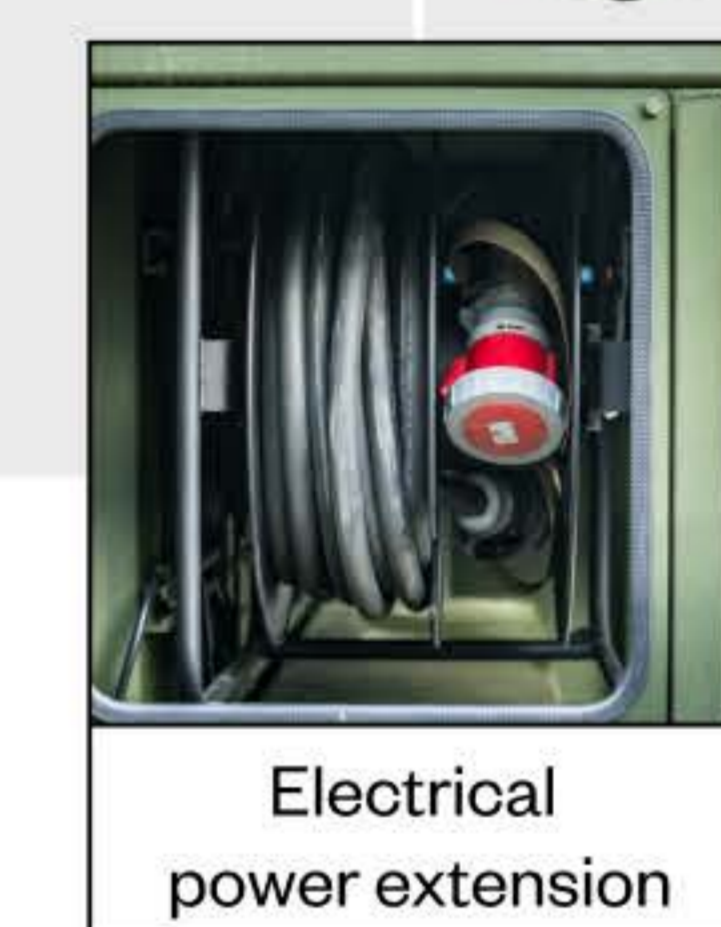
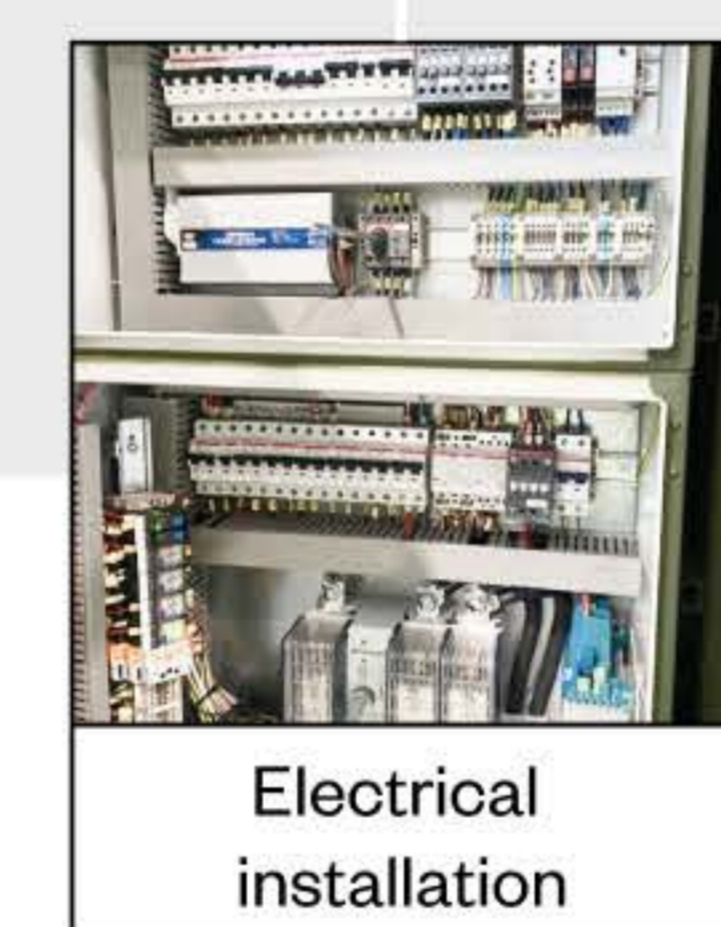
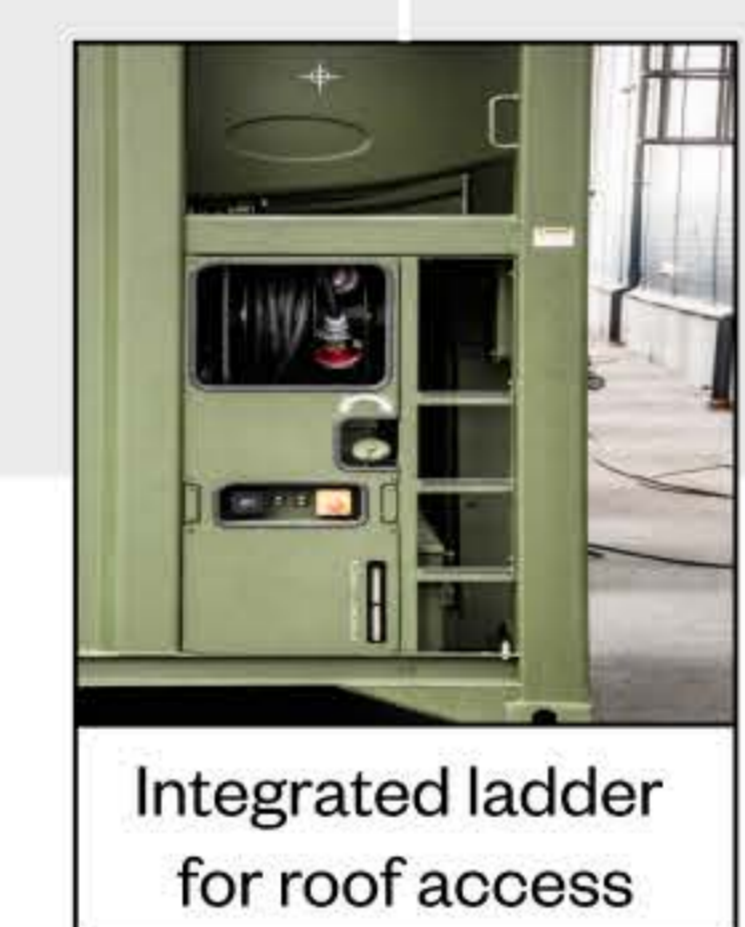
## REFEER

The 20-foot reefer shelter is a temperature-controlled container designed for flexible and mobile use in the field. It features a diesel-electric cooling and heating system powered by both diesel and external electricity, ensuring stable performance in extreme temperatures from -32°C to +49°C. Built on a standard ISO frame with a STANAG hooklift, it offers durable construction, integrated power systems, and reliable climate control for various mission needs. The shelter is ideal for storing temperature-sensitive equipment, supplies, or medical materials in demanding environments.

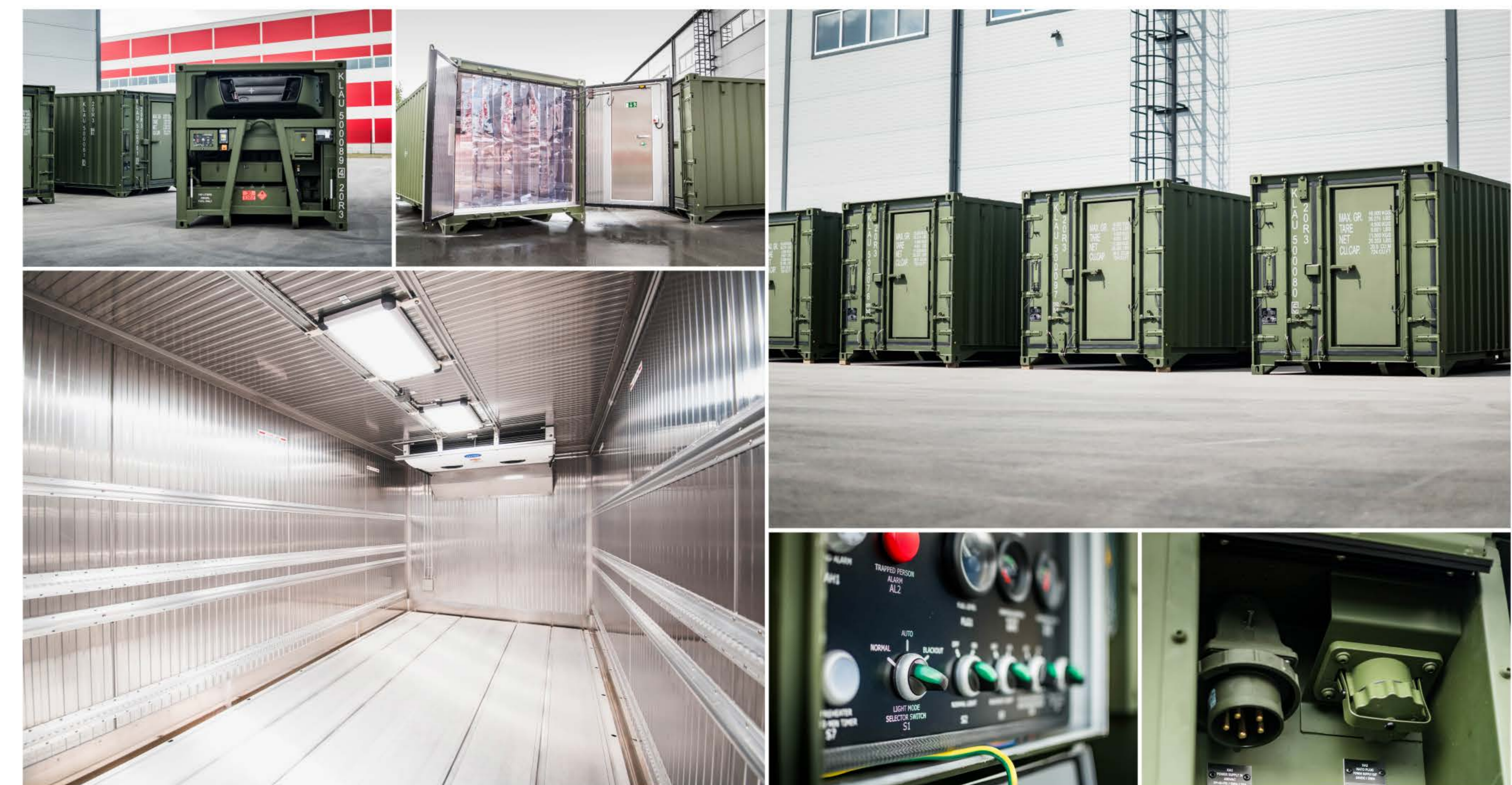


## OPTIONS

The reefer shelter can be customized with additional features such as interior shelving, tool storage, external access systems, and remote monitoring solutions. Upgrades also include lighting, reinforced flooring, power outlets, and climate monitoring. These enhancements improve usability, safety, and adaptability for operational scenarios and mission-specific needs.



## PRODUCT IMAGES



## SPECIFICATIONS

The Reefer Shelter is built on ISO and STANAG-compliant frames, featuring standardized dimensions of 6058 × 2438 × 2438 mm with scalable options. It offers an internal volume of 21m<sup>3</sup> and a centre height of 2300 mm, optimized for temperature-sensitive cargo. Powered by a diesel-electric system, it maintains internal temperatures between 0°C and +30°C and operates reliably in external conditions from -32°C to +49°C. With a gross weight of 30,000 kg and a tare weight of 4500 kg, the shelter includes integrated power and climate control systems.



	<b>DIMENSIONS:</b> 6058 X 2438 X 2438 MM		STANDARD HANDLING COMPATIBILITY
	SCALABLE IN HEIGHT & LENGTH		INTERNAL SHELTER'S VOLUME: 21M <sup>3</sup>
	INTERIOR CENTRE HEIGHT: 2300 MM		DIFFERENT SYSTEMS INTEGRATION
	MAX GROSS WEIGHT: 30.000KG		NET TARE WEIGHT: 4500 KG
	EXTREME CLIMATE RESISTANT (-32°C TO +49°C)		INTEGRATED TEMPERATURE CONTROL (0 °C TO +30 °C)
	ISO STANDARDS COMPLIANCE		CSC CERTIFICATION

\* CAN BE EXTENDED

## FEATURES

The reefer shelter includes diesel-electric cooling, integrated generator, high-performance insulation, blackout lighting, and heated door gaskets. Designed for autonomy and field use, it ensures stable temperature control and reliable long-term performance in demanding and remote conditions.

- OSC Certified, featuring exclusively OE marked equipment.
- Standard ISO container floor frame with forklift pockets and STANAG compliant hooklift bar.
- Diesel and electrical powered Carrier Supra 750 refrigeration unit.
- Refrigeration unit mounted efficiently to allow maximum loading height inside container.
- Integrated diesel generator provides up to 72 hours of standalone operation in field conditions.
- Insulated with sandwich panels and stainless steel sheets on the inner walls.
- Heated door gaskets.
- Personnel door integrated in the double end doors.
- Durable curtain inside the end doors to prevent temperature loss.
- 400V 32A power inlet with power distribution board.
- Possible to charge vehicle batteries (24V) when in field operations.
- Integrated black-out system with roof mounted LED lamps.
- EMC complaint to STANAG 4373 – AECTP 500.

